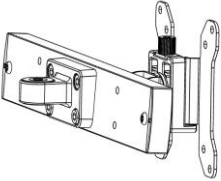


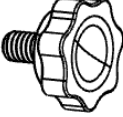


Assembly Instructions | upCentric Monitor Slider

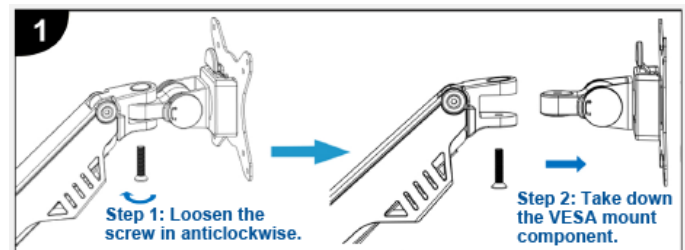
Parts

A (x 1)	B (x 1)	C (x 1)	D (x 4)
Monitor Slider	Connectin Screw	Metal Spacer	Monitor Screw
			

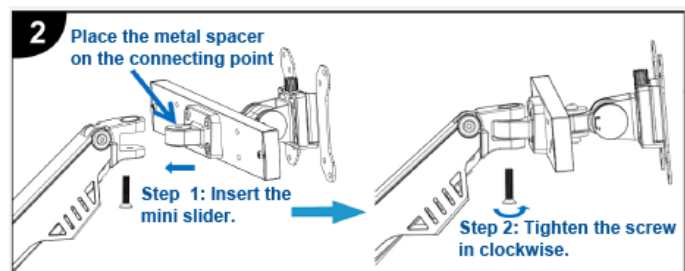
1. Application: To help keep 2 small monitors (17" – 24") side by side on the dual monitor arm, accessory for dual arm.
2. Loading capacity: 6 kg / 13.2 lbs.
3. Horizontal adjustment range: 30 cm / 12"
4. Quantity of optional installation point: 3.

Installation instructions

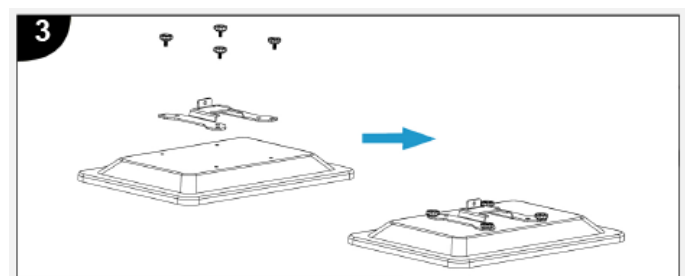
Step 1: Loosen the connection screw (**part B**) and remove one of the VESA mount components on the dual arm as shown in **Figure #1**.



Step 2: Insert the upCentric monitor slider (**part A**) and place the metal spacer (**part C**) on the connecting point and tighten the connection screw as shown in **Figure #2**.

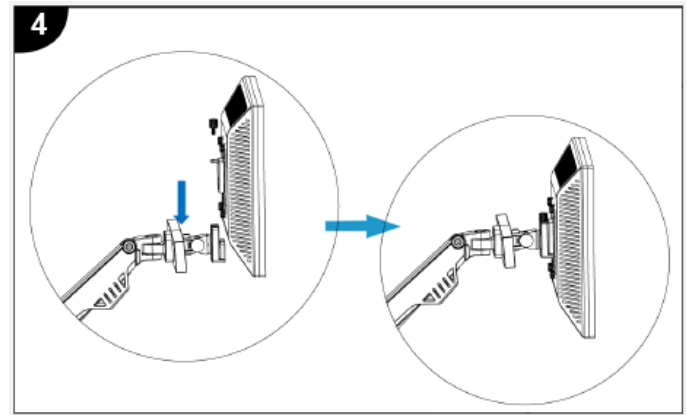


Step 3: Attach the VESA plate with the monitor screws (**part D**) onto the monitor as shown in **Figure #3**.

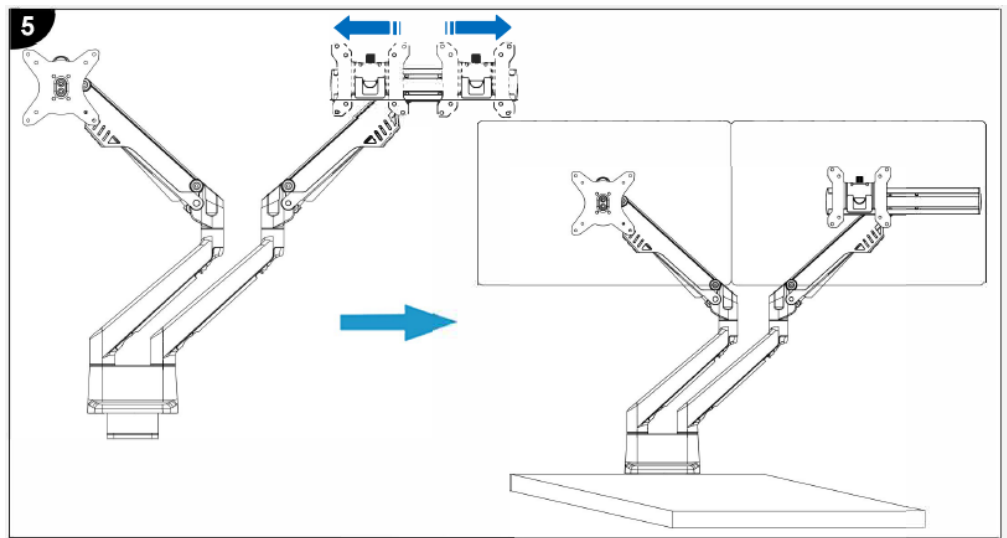


Assembly Instructions | upCentric Monitor Slider

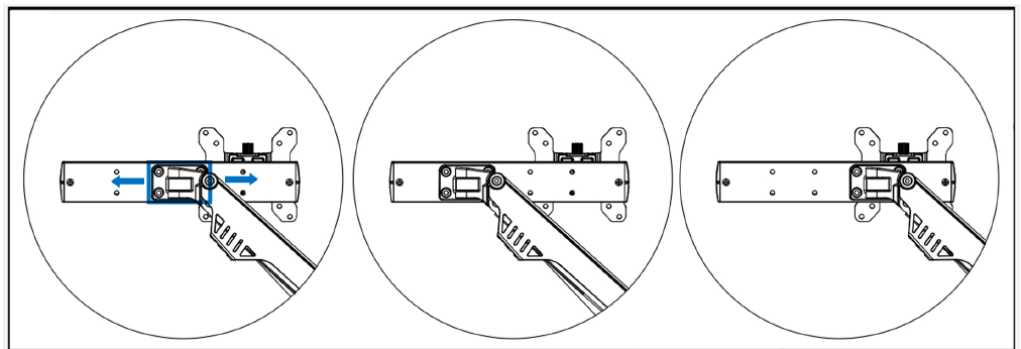
Step 4: Place the VESA plate on the arm mount and tighten the top screw on VESA mount.



Step 5: Adjust the monitor on the upCentric monitor slider to bring the dual monitors next to each other.



Additional note: Select the other 2 connection points on the monitor slider to further extend the range of the monitors.



If you need assistance:

Please contact ergoCentric:

- Phone : 1 866 GET ERGO (438-3746)
- Email : service@ergocentric.com