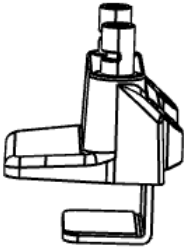
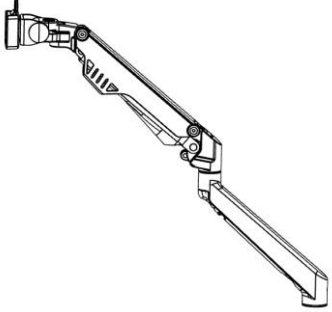
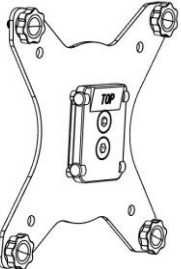
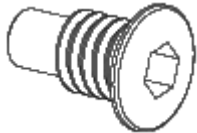
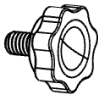




# Assembly Instructions | upCentric Dual Monitor Arms

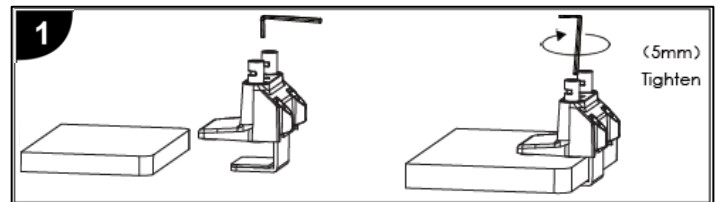
## Parts

A (x 1)	B (x 2)	C (x 2)	D (x 2)
Desk Clamp	Arm	VESA Bracket	180° Lockout Screw
			
E (x 8)	F (x 3)	G (x 1)	
Monitor Screw	Allen Wrench	Grommet Plate and Clamp Screw	
			

## Installation instructions

### Base Installation – Clamp Style

**Step 1:** Fit desk clamp (**part A**) over the edge of the desk in desired location and tighten using provided Allen wrench (**part F**) as shown in **Figure #1**.

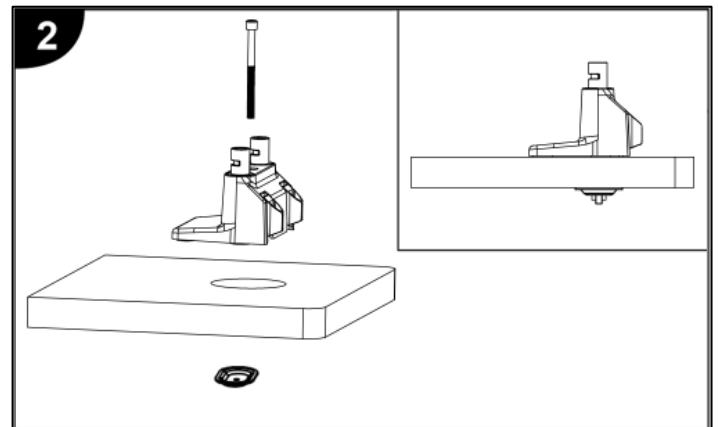


### Base Installation – Grommet Style

**Step 1:** Locate and mark installation site.

**Step 2:** Separate lower section of clamp by removing center bolt and set aside (**part G**).

**Step 3:** Install long bolt through base and desk top. Thread grommet plate over bolt and tighten with grommet nut as shown in **Figure #2**.



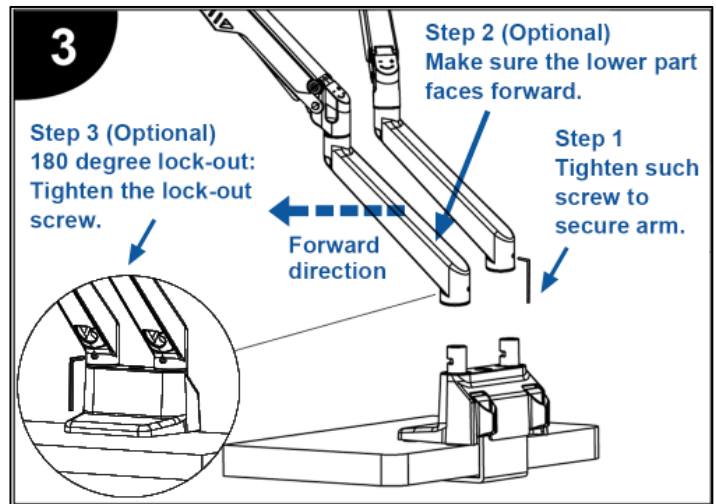
# Assembly Instructions | upCentric Dual Monitor Arms

## Arm Installation & 180° Lockout (Optional)

**Step 1:** Install arm onto base. Note upper and lower arm sections should be secured together using provided screw as shown in **Figure #3**.

**Step 2 (optional):** Make sure the lower arm part faces towards the forward direction.

**Step 3 (optional):** Tighten the screw (**part D**) in the front of the arm using the Allen wrench to initiate the 180° lockout function.

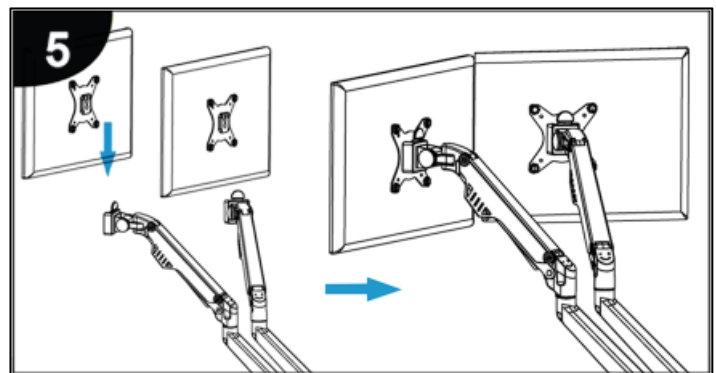
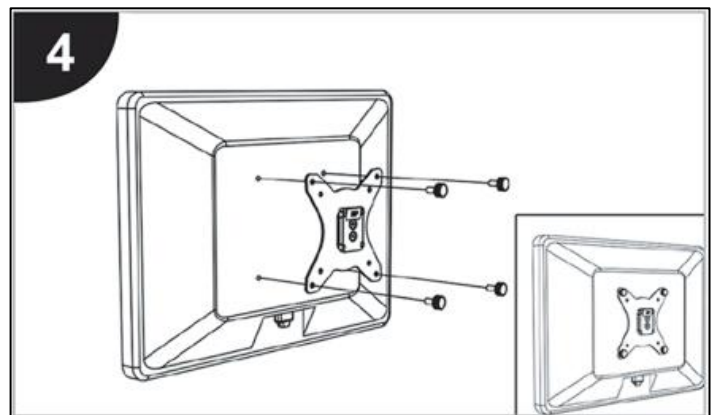


## VESA Bracket / Monitor Installation

**Step 1:** Lay monitor on a flat surface. Using the provided monitor screws (**part E**) secure VESA bracket (**part C**) to the back of the monitor as shown in **Figure #4**.

**Step 2:** Install monitor onto arm. Align VESA bracket to opening and slide into place as shown in **Figure #5**.

**Step 3:** Accommodates PC monitors up to 32" and 19.8 lbs/kg.



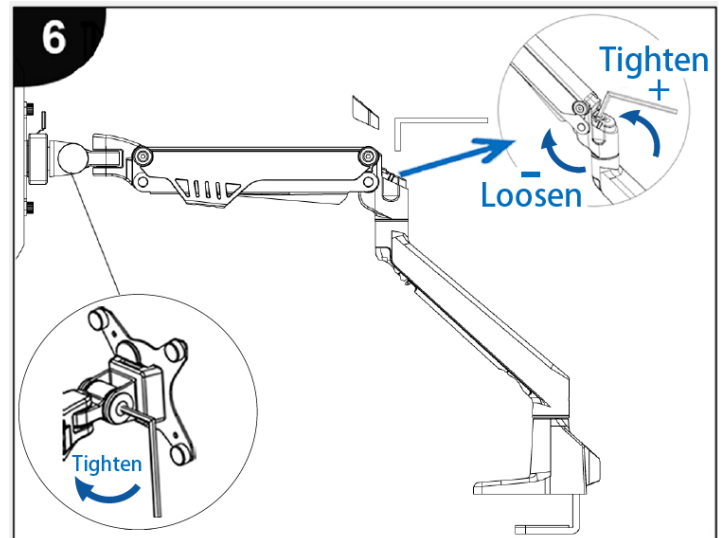
# Assembly Instructions | upCentric Dual Monitor Arms

## Adjust Arm Tension

**Step 1:** In order to adjust the tension of the monitor arm according to the weight of the arm; the monitor arm must be lowered to a horizontal position as shown in **Figure #6**.

**Step 2:** Use the provided Allen wrench (**part F**) to adjust the arm's tension to hold your arm in the proper position. Rotate the wrench counter-clockwise (+) to tighten the arm for heavier monitors and rotate the wrench clockwise (-) to loosen the arm for lighter monitors.

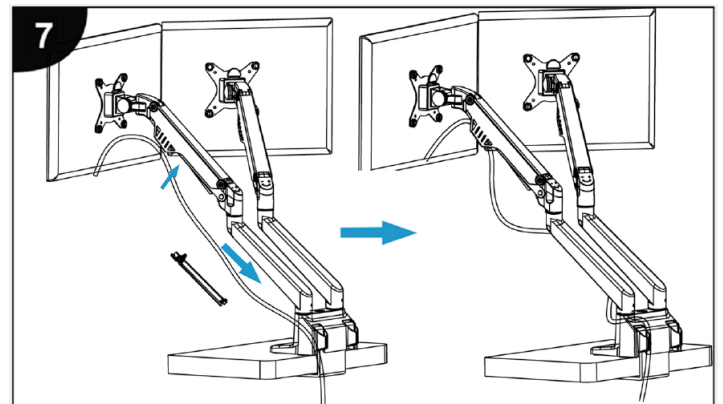
**Step 3:** Using the Allen wrench provided to tighten the screws for heavier monitors.



## Cable Management

Monitor cables may be threaded through the upper and lower sections in order to complete the installation.

**Note:** An allowance of extra cable should be left to accommodate arm movement.



## **If you need assistance:**

Please contact ergoCentric:

- Phone : 1 866 GET ERGO (438-3746)
- Email : [service@ergo-centric.com](mailto:service@ergo-centric.com)